



PELEE ISLAND WINERY 2026 HALF MARATHON

SAT., MAY 30 @ 10 AM

SURVIVAL GUIDE



HELLO RUNNERS,

Welcome to the 2026 Pelee Island Winery Half Marathon!

We're thrilled to have you join us on the island for what promises to be an unforgettable weekend. With race day just around the corner this Saturday, May 30th we've put together a handy Survival Guide to help you make the most of your experience. From travel tips to hydration stations, everything you need is right inside. Let the countdown begin!

We hope everyone is healthy and getting excited to leave for the island. As always we are packed and getting on the Ferry early on Thursday morning to prepare the course for Saturday's Race. The weather looks like its going to be a hot one this far out showing sunny skies with a high of 59°F. Runners from all over North America are traveling to the little island in the middle of Lake Erie.

INTRODUCING YOUR 2026 RACE SHIRTS AND MEDALS!

Extra 2026 shirts and past year shirts will be available for purchase Friday & Saturday.



CELL SERVICE is getting better, but still unreliable on the Island no matter who your carrier is US or Canadian. It is frustrating and a blessing depending on your point of view. Good news is that Internet has improved greatly on the Island with most businesses now getting fibre internet. Internet has caused us a timing issue almost every year, so we are hoping this will be a big improvement this year.

We are **CHIP-TIMING** the race again this year, but keep in mind you may still not have your results until Sunday if there are issues with communication. We will strive to get them earlier, but the Top 3 male, Top 3 female, Top Male & Female over 65 competitors will be awarded on Saturday afternoon at the end of the race.

You have to start your race at 10:00am to be eligible to win. There will be a 9:00am start for the long haulers and walkers who want to make sure they are in on time

for the party. We have allowed this in the past and will do it again but they cannot qualify for winning. Your bib will be marked and the number recorded.

AWARDS

TOP 3 Male Competitors

TOP 3 Female Competitors

TOP Male 65+

TOP Female 65+

PRIZES

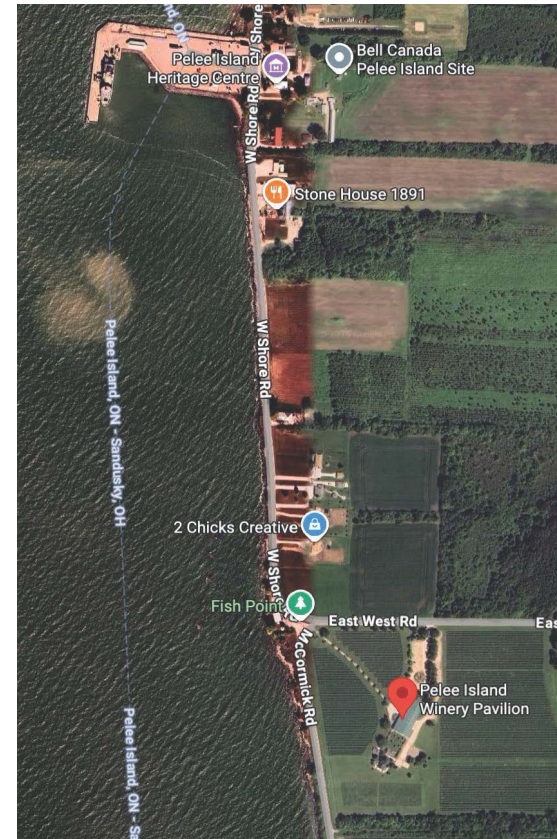
Winners will receive a 3L bottle of Pelee Island wine as is tradition. Bonus prizes will be available to top male and female runners overall.



FERRY SERVICES - Get there early, at least one hour before if you are taking a vehicle over. Make sure you book your walk-on tickets as well. MINIMAL Foodservice on the ferry. Ferry passage is not included in your race fees.

RACE DAY FERRY at 7 am leaving the dock in Leamington, be there before 6 am! You have to purchase all walk-on fares to get to the island through the [Owen Sound Transportation Services](#). When you get to the island and take a right to the Winery - **PLEASE LET ALL THE WALKERS (who are starting at 9:00 am) GO BEFORE THE RUNNERS in line.** The boat will land at 8:30 and they need their bibs to start as soon as possible.

RACE KIT PICK UP - Friday, we will be set up at the Pelee Island Winery Pavilion located at 20 East-West Rd from 11:00am to 8:00pm. This is the finish line and luncheon location. From the West Dock (where the ferry arrives), please turn right (South) in less than 1k (approx 2 minutes). You will pick up your bib, shirt and luncheon wristbands at this time. There is also Race Day Pick Up starting at 8am at the Winery till race time.



Day of Race Registration & Extra Buffet Tickets will be available for purchase Friday & Saturday during race kit pickup. Credit, Debit and Cash will be accepted.



ISLAND GROUND TRANSPORTATION

There are opportunities to rent Bikes and Golf Carts to get around the island. In 2026 there is no formal taxi service on the island. If you are walking around on the Island more often than not locals will stop and ask you if you want a ride. It is just that kind of place.

[Pelee Island Adventures](#) - Golf Cart and Bike Rental

[heliSIX](#) - Day of Helicopter rides around the Island. **\$99 per person.** Click the link to book ahead.

RACE DAY - There will be Race Kit Pick Up at the Winery starting at **8am** till race time. Start Wine (Line) as always is near the former Vin Villa model on the East West Road. At the Start Wine you will have Port-a-johns. Bag Check is at the Winery. You can pick up your checked bag at the Winery at the end of the race, pick up by 2pm please. The race starts for walkers at 9am and for runners promptly at 10am. Start on East West Rd. near the Vin Villa model (by the Artworks), run east to East Shore Rd., run north to Harris Garno Rd., run west to North Shore Rd., run south on West Shore Rd. to finish at the Pelee Winery Pavilion. There are aid stations every

2K with Water provided by [Gruppo\(Infinite\)](#), small aid kits (Band-Aids, Vaseline, etc.), happy race staff and islander volunteers. Kilometre Marker 10 has GU.

THE LUNCHEON PARTY will start at 12:30pm. If we can open it sooner we will. This year's luncheon is catered by [Mazaar Restaurant](#) from Windsor. Music will be Provided by The Killer Hooks. Wristbands are mandatory for the buffet and your included one 6oz glass of wine.

2026 MENU - MAZAAR RESTAURANT

Potato Salad, Beetroot Salad, Coleslaw, Hummus w/ Pita Bread, Rice , Vegetables, Chicken Shawarma Rolls, Falafel Rolls, Fried Fish, Creamy Chicken Skewers, Bocconcini Skewers, Assorted Cookies, Fruit Platter

1 X 6OZ GLASS OF WINE included in ticket. Extra glasses of wine will be charged at a special rate of \$7 per glass during race day.

SPECIAL MARATHON RED & WHITE 750mL wine bottles will be available for purchase on race day.



EXTRA'S

While on the ferry you can pick up island maps, some are also available at the township office and the bike rental (across from the ferry docs, heading north).

The Liquor Store closes at 6:00 pm (situated across the street from the ferry dock, heading south)

The Co-op: grocery/variety store; closes at 3:00 pm
MONDAY - SATURDAY. Ice is available at The Co-op, East side Campground. There is NO Bank on the island. U.S. Visitors should exchange money prior to visit, however, most businesses accept USD. There is one ATM Machine on the island at the Stone House. Most establishments accept major credit cards or debit, and the LCBO offers cash-back with purchases.

The Ontario Provincial Police (OPP) enforces the law on our Island. An officer can be reached by calling (519) 724-2181 or 911 if it's an emergency. Medical Clinic staff and Ambulance Service are on duty on the island.

BUG SPRAY, BUG SPRAY, BUG SPRAY (WILL NOT HELP YOU WITH BLACK FLIES, RUN FASTER!)

The roads on Pelee are narrow, and some are gravel. Please allow enough room for bicycles and vehicles traveling in the opposite direction.

RESTAURANTS

[Westview Restaurant](#) - 519-724-2500 located across from the west dock on WestShore Rd, open for breakfast, lunch and dinner 7 days a week.

[Stone House 1891](#) - 519-724-1100 near West Dock with a patio, specialty cocktails, and stone fire pizza.
Special pasta dinner available for runners

[The Dog and Goat Restaurant](#) - Located across from the OLD Bakery on North Shore Road.

[Pelee Island Winery Pavilion](#) - charcuterie, flatbreads, small plates and of course...wine!

[CONEHEADS](#) - Offers hard scoop ice cream and sausages and breakfast options

[The Shack Shop](#) - Offers hard scoop ice cream and sausages and breakfast options

[The Filling Station](#) - Hotdogs and ice cream at the North Dock.

[The Legion](#) - Early-morning breakfast and casual pub-style lunches.

